

Print HTML

5 of 18

- 1
- 2
- 3
- 4
- 5
- 6
- 7
- 8
- 9
- 10
- »

Bottom

· Portal Gallery display

534 Herb Thomas Road

Sugar Grove, NC 28679

MLS#: 218003

 Map

\$359,000

Active

3 Beds

0 H Bath(s)

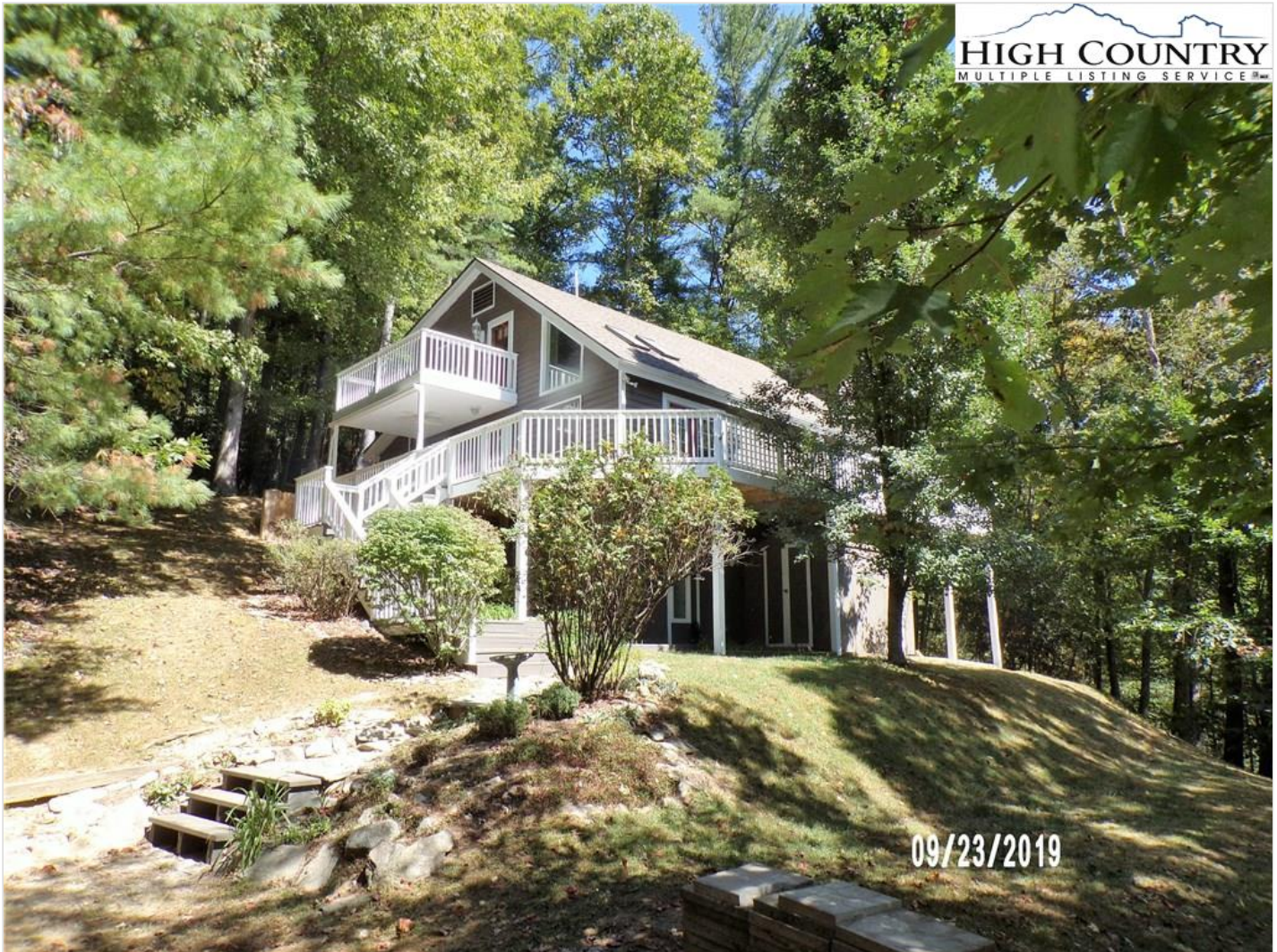
Built in **1984**

Single Family

3 F Bath(s)

2,192 SqFt

0.90 Acres



HIGH COUNTRY
MULTIPLE LISTING SERVICE

09/23/2019

LOOKING FOR A PERFECT HOME IN VALLE CRUCIS? Like long walks by the river? LOOK NO FURTHER!

What is not to love in this well taken care of, "MOVE-IN READY", home that has had many upgrades: bathrooms, kitchen & master suite. The kitchen is truly a delight, with cherry cabinets, pewter hardware, quartz countertops, stainless appliances, and not to mention the "Butler's Pantry" with add'l refrigerator, butcher-block tops, cabinets (with pull-outs), and bar sink. Brazilian Cherry floors run throughout the living, dining, & kitchen. Impressive brick FP, lots of light & vaulted ceilings add to this spacious home. The French Doors off the Dining Room bring the outdoors in & increase your entertaining space by utilizing the newly updated & expansive deck space. Also, on main: BR/office, laundry, & full bath. Upstairs, 2 Bedrooms(one w/ own deck!) share a bath. The new downstairs Master Suite with its own entrance and patio, encompassing a spa-like bathroom with Kohler fixtures, including dual shower-heads, body sprayers, marble floors, cherry cabinets w/ granite tops. Stunning walk-thru closet w/ chandelier and closet system. A barn door reveals an add'l closet! A MUST SEE!

About 534 Herb Thomas, Sugar Grove, NC 28679

Directions: From Boone take Hiway 105 South to Broadstone and make a right. Go past the Mast Store and continue until you reach Mast Gap Road, (Valle Cay entrance will be across the street). Make a left on Mast Gap follow to first street on left Herb Thomas Road, turn and follow until you come to house number 534 on the right in the curve.

General Description

List Price	\$359,000
MLS Number	218003
Property Type	Residential
Property Sub Type	Single Family
County Or Parish	Watauga
Area	5-Watauga, Shawneehaw
City	Sugar Grove
Subdivision	St. John's Ridge
Fire District	Cove Creek
Elementary School	Valle Crucis
DOM	150
Beds Total	3
Baths Total	3
Baths Full	3
Baths Half	0
Style	Traditional
1st Flr HLA	552
2nd Flr HLA	1,090
3rd Flr HLA	550
HLA Abv Grd	2,192
Blw Grd HLA	0
Total HLA	2,192

Blw Grd UnFin	0
Total UnFin Blw Grd	0
Total UnFin	0
Year Built	1984
Acres	0.90
One Level Living YN	Yes

Property Information

Property Sub Type	Single Family
Lot Number	8
Property Taxes	\$745.00
Parcel Number	19715409973000
Confirmed Spec Assess YN	No
Proposed Spec Asses YN	No
Book Page	629/735
Owners Association YN	No
Zoning	None

Interior Features

Foundation	Outside Ent-Basement, Part Finish-Basement, Walkout - Basement
Heat	Baseboard Electric, Mini Split Ductless
Air Condition	Other-See Remarks
Hot Water	Electric
Fireplace	Brick, Flue, Woodburning
Appliances	Dishwasher, Dryer, Electric Range, Garbage Disposal, Microwave Hood/Built-in, Refrigerator, Trash Compactor, Washer

Exterior / Construction

Exterior	Wood
Roof	Asphalt Shingle
Water	Private Well
Sewer	Private
Gar/Park	None
Driveway	Private Gravel
Porch Deck	Covered, Multiple, Open
Views	River View, Seasonal View
Water Features	River Access

Road

State Maintained Gravel

Amenities

Cable Available, HSpeed Internet, HSpeed Internet-Cable, HSpeed Internet-DSL, HSpeed Internet-Satellite, HSpeed Internet-Wireless, Long Term Rental Permitted, Partially Wooded, Short Term Rental Permitted

IDX Offered By: Hyatt In The High Country, Inc.

Notes for you and your agent

Notes for, and from, your contacts appear here when viewing this listing in a contact's results.



1 2 3 4 5 6 7 8 9 10 »
Portal Gallery display
Top